



“Soluciones en  
Herrajes”

Las mejores  
marcas y la  
mejor calidad

# CATÁLOGO

DISTRIBUIDORA DE  
HERRAJES PARA ALUMINIO



ARAÑA-1DS



ARAÑA-2DS



ARAÑA-3DS



ARAÑA-4DS



ARAÑA-2COS DS



ARAÑA-4COS DS



ROTULA DS



CO-ARAÑA ED



CLIP-5421 DS ANGULO T/TITAN



ARAÑA-1201002 SA



ARAÑA-1201004 S



PLACA-2230-30 S



ANGULO-2240 30 S



ROTULA-1203 SA



ARAÑA-1213 BABY



ARAÑA-1214 S BABY



ARAÑA-1HS



ARAÑA-2HS



## POSTES Y HERRAJES PARA BARANDAL

BARANDAL 100 DS



BARANDAL 101 DS



BARANDAL 102 DS



BARANDAL 200 DS



BARANDAL-201 NDS



BARANDAL-202 NDS



CO-1403 IDS



CO-1403 DDS



CO-1402 DS



BASE-1400 DS 2"



BASE-1401 DS 2"



BASE 1402 DS 1 1/2"



CO-1400 UDS 2"



TAPA-2000 DHA



BRIDA-2000 DS



CO-1401 UDS 1 1/2"



CO-1401 DS



TAPA-1400 DS 2"



SO-1403 DS 1 1/2"



SO-1402 DS 2"





SO-1401 DS 1 ½"



CO-2100 DHA



SO-1400 DS 2"



POSTE-25 DS



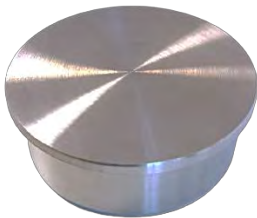
SO-BARANDAL IDS



SO-BARANDAL IMDS



TAPA-38 DS



TAPA-2100 DHA 2"



TUBO-2" AI CAL. 18 DE 6.10 MTS



TUBO-1 ½"  
TUBO-1"  
TUBO-½"



BM-DHA ACERO INOX 304



BM-DESF D ACERO INOX 304



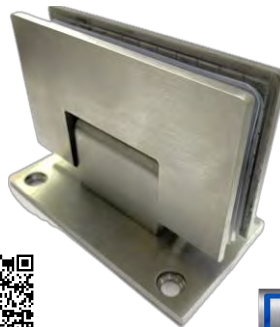
BM-PIV D ACERO INOX 304



BC-135 D ACERO INOX 304



BM-1975 DS INOX 304 ECO



BC-90 D ACERO INOX 304



BC-180 D ACERO INOX 304



BC-TRIPLE D ACERO INOX 304



CLIP-638 ED (ECO A/I 201)



CLIP-202 D (ECO A/I 201)



CLIP-200 D (ECO A/I 201)



CLIP-638 D (A/I 304)



CLIP-90 (A/I 304)



CLIP-100 D (A/I 304)



CLIP-201 D (ECO A/I 201)



CLIP-102 D (ECO A/I 201)



CLIP-1106 ED (ECO A/I 201)



CLIP-180 D (A/I 304)



CLIP-101 D (A/I 304)



CLIP-135 D (A/I 304)





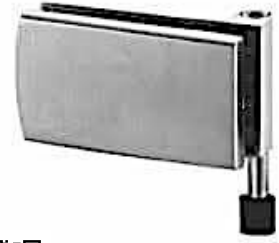
BC-1306 DS



BM-1301 DS



BM-1302 DS



BC-1303 DS



BC-1304 IDS o DDS



BC-1305 DS



BM-1307 DS



BM-1308 DS



BM-1311 DDS



BM-1311 IDS



CH-1309 DS



CO-1310 DS



CANCEL-1600 DHA 65 KG (TIPO BACALAR)



TUBO-1" ACERO INOX



SISTEMA-1700 DHA (TIPO OAXACA)



CO-1600 90 DHA



CO-1600 VDHA



BARRA-1600 D  
CUADRADA



CO-1200 V DHA



CO-1200 DHA



TOPE-1200 DHA



CO-1201 D SISTEMA 1200



CANCEL-1200 DHA



RIEL-1200 DHA



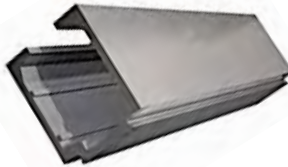
GUIA-1200 DHA



CANCEL-1300 DHA



RIEL-1311 DS SISTEMA 1300



RIEL-1312 INFERIOR DS



CANCEL-1400 DS



SISTEMA-1331 S



SISTEMA-1332 S



RIEL 1333



RIEL 1333 DOBLE



RIEL 1333 RYF



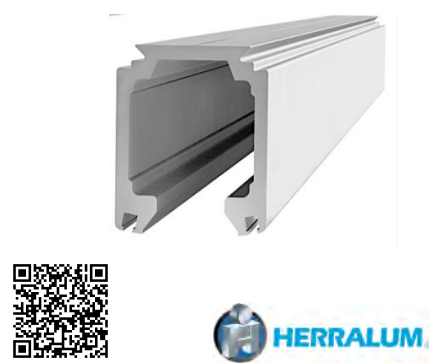
CAR- HUATULCO



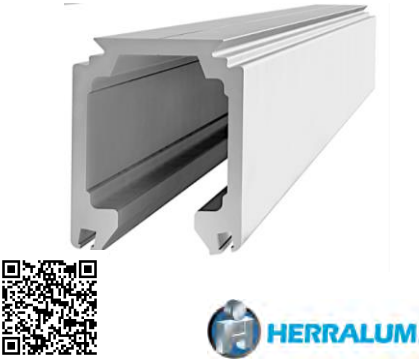
CAR- HUATULCO 100



RIEL- HUATULCO



RIEL- HUATULCO 5



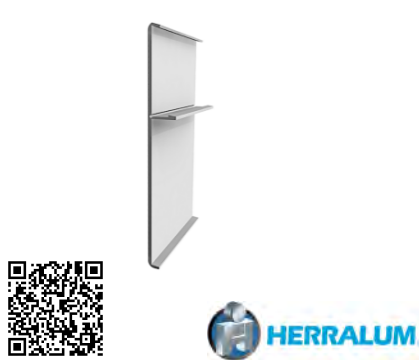
RIEL- HUATULCO FI



TOPE-HUATULCO



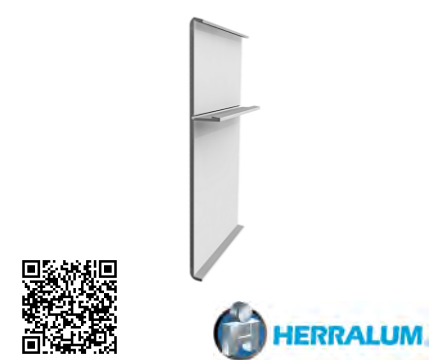
TAPA-HUATULCO 3



GUIA-HUATULCO



TAPA-HUATULCO 5





CANCEL ARIES 10MM 1.50 Y 2.00 MTS



CAN-INT ACUARIO 6MM ESCUADRA



CAN-CASS LIBRA 10MM 1.50



CAN- 1.2M ESC 10MM



CAN- 1.2M ESC 6 MM



TOALLERO- INTEGRA



CAR-INT 6MM



CAR- INT 9MM



CAR- INT 9MM EXP



CAR- INT 6MM EXP



PERILLA-GLASS LIGHT



HERRAJES- INT 6MM PRESION



HERRAJES- INT 9MM BARRENOS



WL-570 DS



WL-572 DS



WL-574 DS



WL-575 DS



WL-571 DS



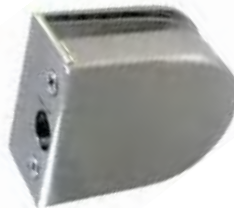
WL-573 DS



GL-1190 D



CO-1190 D



WL-1173 DS



GL-1230 D



CO-1230 D



CO-1173 DS



CLIP-6321 NS



CLIP-6321 DS



CLIP-6322 IDS



CLIP-6320 DS



CLIP-6320 IDS CON OPRESOR



CLIP-6322 TDS



CLIP-6319 DS



CO-1130 DS (31X38)



CO-1185 DS



CO-1158 CHDS (18X20)



CO-1158 MDS (18X38)





CO-2232 DS



CO-2231 DS



CO-2207 DS



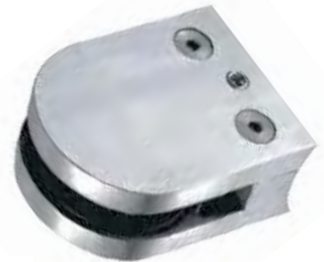
CO-1178 DS



CO-1192 D PLANO



CO-1191 D CURVO



CO-1228 D



CO-1227 D



CO-1177 DS



CO-ESTAND 1 DS (1 1/4" X 1")



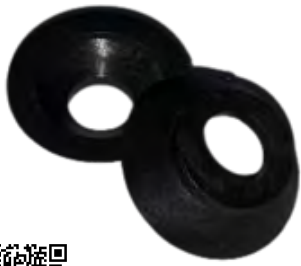
CO-2.5 IDS (1" X 1")



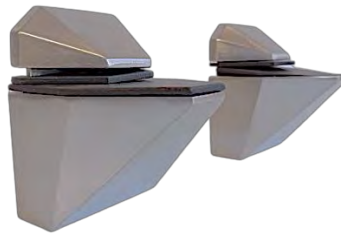
CO-ESTAND 1NDS 1 1/4"



NAYLAMID



BF-1305 D



BF-1309 D



CO-1602 DS



CO-1603 DS



CO-1601 DS



BF-100 D



BF-1275 D



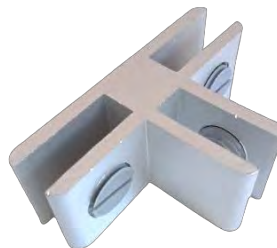
BF-1276 D



CO-1805 EN



CO-1803 TN



CO-1804 CN



INSERTO DS



INSERTO-D DS



PV-02 DS



WD-052



PV-10 D DS



PV-10 DS



PV-BARRA DDS



PV-BARRA DS



PV-1605 DS



PV-1602 DS



WD-016



WD-510 DS



WD-520 DS



WD-585 DS



WF-10 DS



WF-10 DDS



WF-20 DS



WF-30 DS



WF-40 DS



WF-41 IDS



WF-41 RDS



WL-057 DS



WL-10 DS (TIPO DORMA)



WF-PT10 A/I





WF-PT20 A/I



WL-US10 A/I



WF-PT30 A/I



WF-PT40 A/I



PV-PT24



WF-10 J



WF-1007 SA



## BISAGRAS HIDRÁULICAS PARA CRISTAL

BH-80 DHA (80 KGS)



BH-1200 DHA (120 KGS)



BH-300 DHA (300KGS)



BH-1400 DHA (80 KGS) SIN POZO



BH-1300- DHA KIT (80 KGS)



BH-400 BRK (80 KGS) SIN POZO



BH-1200 SM25 (120 KGS)



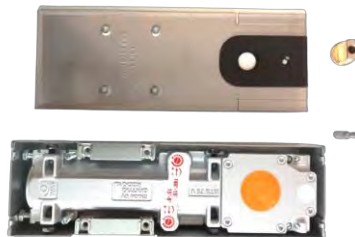
BH-1200 M60 (120 KGS)



BH-1200 MAB (120 KGS)



BH-1200 D75R (120 KGS)



BH-1200 BTS60 (80 KGS)



BH-1300 R (80 KGS) KIT



BH-1200 KL (120 KGS)



BH-1198 O (120 KGS)



BH-750 O (120 KGS)



BH-1200 H (80 KGS)



## JALADERAS PARA CRISTAL

CO-1802 D SEPARADOR



CO-1300 DS



JA-15 D



JA-30 D



CO-1200 DS



JA-H30 DS (30CM)



JA-H50 DS (50 CM)



JA-H1.20 DS (1.20 MTS)



JA-H1.50 DS (1.50 MTS)



JA-H 180 DS (1.80 MTS)



TOA-20X45 D



TOA-15X45 D



JA-CLIO 1.5 DS CON LLAVE



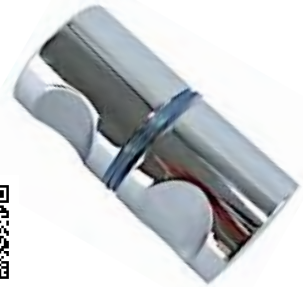


## PERILLAS

PE-DR300 D



PE-PE300 D



PERILLA-GDK



PE-PO300 D



## MARQUESINAS

MARQ-2001 DS



MARQ-2002 DS



MARQ-2003 DS



MARQ-2004 DS



## HERRAJES PARA VITRINAS

GS-SUP DS



GS-INF DS



GS-INT DS



GS-INTER76 D



GS-INTER78 D



CABLE-GS



BM-224 D



BM-168 D



BM-1101 D



CH-LK10 DC



CH-LK42 DC



CH-0042 DC



BM-1131 D



GS-700 SUPERIOR



GS-707 SUP GANCHO



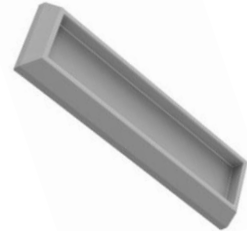
BI-3000 C



BI-4000 C



BI-2212 C



**CONECTORES PARA BARRA ESTABILIZADORA**

CO-1244 D



TUBO-3/4 1.20 ACERO INOX



CO-1501 D



CO-1500 D (ABIERTO)



CO-1500 D (CERRADO)



BA-2300-60 D



## BARRAS ANTIPANICO PARA VIDRIO

BA- 1027

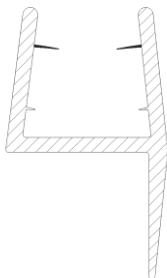


BA- 1028

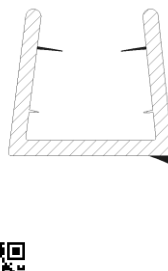


## PERFILES DE POLICARBONATO

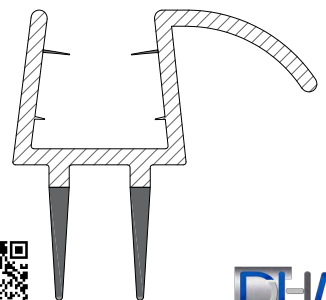
PC-F1 D



PC-F4 D

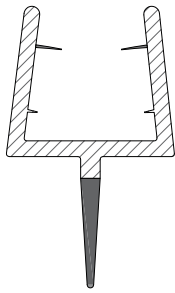


PC-F5 D

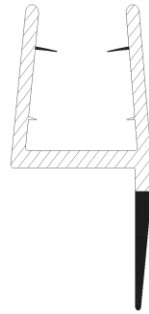




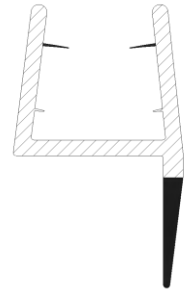
PC-F6 D



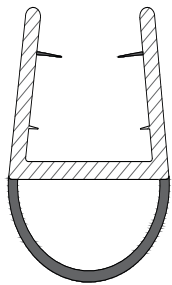
PC-F7 D



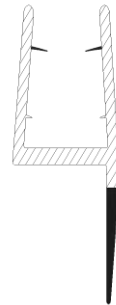
PC-F7 12MM D



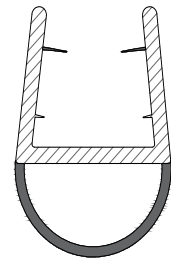
PC-F8 6MM DHA



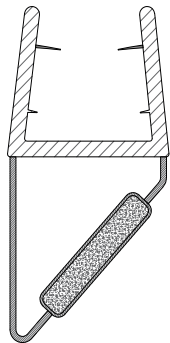
PC-F7 6D



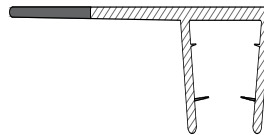
PC-F8 D



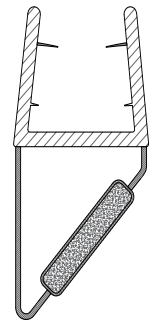
PC-IMAN 180 10MM D



PC-F9 D



PC-IMAN 6MM D



CARGUERO-2 DHA



## CARGUEROS

CARGUERO -3 DHA



ESCUADRA DHA



CLAVE	MEDIDA
UNION L BL	1/4 "
UNION L BL 8.5	3 /8"
UNION L BL 12.5	1/2"



SAL-SILICA DHA



SEPARADOR



CLAVE	MEDIDA
SEPARADOR-6.5	1/4 "
SEPARADOR-8.5	3 /8"
SEPARADOR 12.5	1/2"



SI-3309



BA-101X610 (4X24)



BA-076X457 (3X18)



BA-076X533 (3X21)



BV-L75-16 DHA



BV-L75-19 DHA



BV-L75-20 DHA



BV-L75-22 DHA



BV-L75-35 DHA



BV-AVELLA 25 DHA



BV-AVELLA 35 DHA



BV- 1/8 (3MM)



BV- ¼ (6MM)



BV- 3/8 (10MM)



BV- 1/2 (13MM)





DISTRIBUIDORA DE HERRAJES PARA ALUMINIO

CATÁLOGO

HERRAJES  
PARA ALUMINIO



CA-1505 DHA



CA-1506 DHA



CA-1512 DHA



CA-1513 DHA



CA-1514 DHA



CA-1504 DEMB



CA-1515 DHA



CA-1515 PDHA



CA-1516 DHA



CA-1503 DHA



CA-1520 DHA



CA-1521 DHA





CA-1504 DF



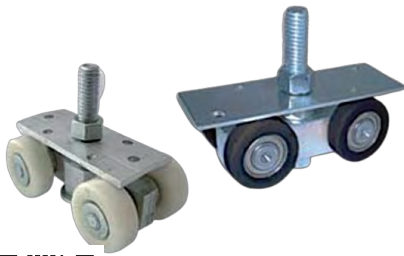
CA-1508 DHA



CA-1508 E



CA-1004



CA-1507 EMB



CA-1500 NI



CA-1512



CA-1513



CA-1514



CA-1500 E



CA-1500 EA



CA-1508 NE



CA-1502 N



CA-1502



CA-1515 AE



CA-1516 AE



CA-1516 E



CA-1515 E



CA-1516 AEA



CA-1516 EA



CA-1503 E



CA-1503 RI



CA-1504 E



CAR-CC6



## BISAGRA HIDRÁULICA PARA ALUMINIO

BH-80 DHA (80 KG)



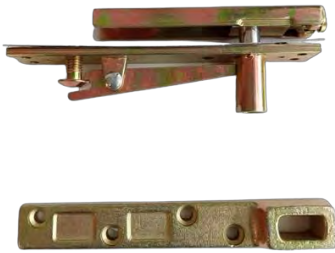
BH-1200 DHA (120 KG)



BH-300 DHA (300 KG)



BR-BFT DDHA



BR-BFT DHA



BH-1200A DHA (120 KG)



BH-1200 ADAWH (120 KGS)



BH-1200 R (120 KGS)



BH-1199 O (120 KG)



BH-1200 AJ (120 KG)



**jackson**

BH-1200 ARY (120 KGS)



**RYOBI.**

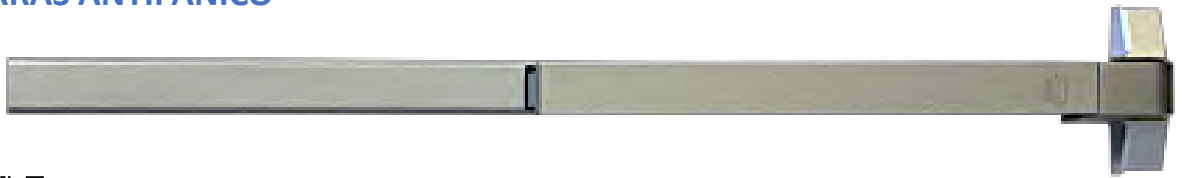
BH-1200 BTS60 (120 KG)



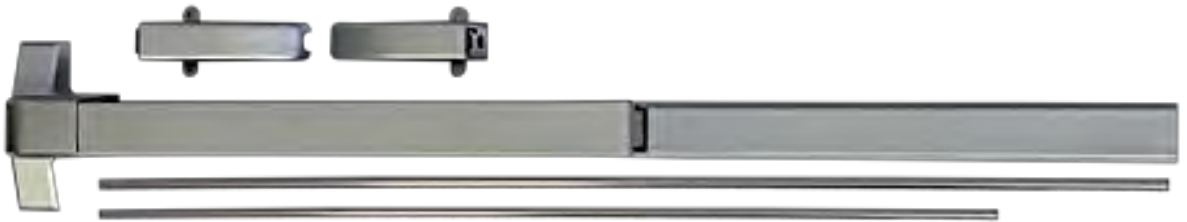
**DORMA**

**BARRAS ANTIPÁNICO**

BA-1106 DS



BA-1107 DS



**DHA**  
DISTRIBUIDORA DE HERRAJES PARA ALUMINIO

**DHA**  
DISTRIBUIDORA DE HERRAJES PARA ALUMINIO

BA-1106 N



**jackson**

BA-1100



**DHA**  
DISTRIBUIDORA DE HERRAJES PARA ALUMINIO

BA-1101



**DHA**  
DISTRIBUIDORA DE HERRAJES PARA ALUMINIO



BA-1102



CH-TRIM



BA-2203



CILINDRO-2202 N



## CHAPAS

CH-1400 D (EUROVENT)



CH-1706 D (DE GANCHO)

CH-1707 D (MARIPOSA CILINDRO)

CH-1703 D (DOBLE CILINDRO)



CH-1607 P



CH-1604



CH-1605



CH-570



CH-1605 MM



CH-1606



CH-1610



CH-1614 C



CH-1614 CA MARIPOSA



CH-1600 P



CH-549



CH-1603



CH-1619



CH-1615



CH-1617



CH-1618



CH-1620



CH-1598



ESCUDO



CO-1806 (CONTRA ELECTRICA)



CILINDRO



BR-10 AJUS DHA



BR-1422 REFORZADO 22"



BR-1400 DHA

8" 12" 16" 20" 24"



BR-1428 BRAZO REFORZADO 28"



## BISAGRAS PARA ALUMINIO

BT-S35



BT-S70



BT-EUROVENT



BT-1400 2 PALAS



BT-1401 3 PALAS





BP-1200



BL-1300



BT-EUROVENT



## PASADORES

PA-4100 PASADOR EUROVENT



PA-2599 DHA



PA-1400 PLANO LINEA 1400



PA-4006 D 5CM



PA-4007 D 10CM



PA-4008 DBL 15 CM



PASADORES

PA-2602 N



PA-2603



PA-2175



BA-2530



JALADERAS PARA ALUMINIO

JA-DHA-2"



JA-DHA-3"



JA-1200



MG-800 DHA



JA-1148



JA-444



CO-1700 12CM



CO-1701 18CM



JA-2301 12CM



JA-2302 18CM



JA-2300 P/ 1 1/2"



JA-2305 TROMPA



JA-2195 MOSQ



JA-1283 3"



JA-4031



JA-4600



UÑERO-4600



JA-4262



JA-4033



JA-704





MA-218 DHA LINEA 1400 NEG, BCA Y NAT



MA-219 DHA LINEA 1400 BCA Y NEG



MA-2299 MANIJA PROY T  
CANADIENSE IZQ



MA-2298 MANIJA PROY  
CANADIENSE DER



MA-0701 CREMONA EUR TOVIC



JA-702 CREMONA P/MULTI



MA-4457 RECUP. TOVIC



MULTIPUNTO



KIT-615 ABATIBLE L. ESPAÑOLA

OSCILO



KIT-4600 KIT PERIMETRAL



OPERADORES Y  
BALANCINES

BA-1100 DHA BALANCIN DEL 14" AL 30"



OP-2501 DHA



OP-2502 DHA



MOTOR-HERRAMATIC



OP-2500



OP-2502



OP-2504



CN-1400



CN-1400 C



OP-2505



**TOPES**

TB-56 HS



TB-49 D



TB-54 D



FP-0001



TB-0049



TB-0054



## CIERRA PUERTAS, SELLAPOLVOS Y RESBALONES

CP-1801



CP-200



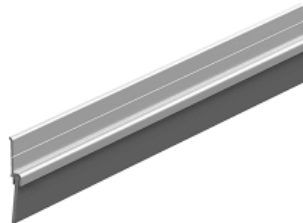
CP-1801



CP-1702



SE-4501 SENCILLO



SE-3501 AUTOMATICO



## RESBALONES

RS-3203 GDE



RS-3200

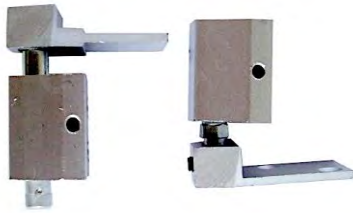


RS-3202 CH



## PIVOTES

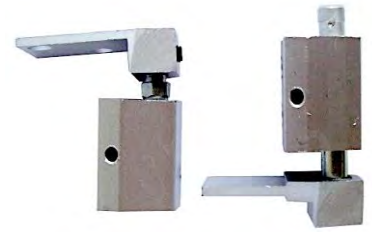
PV-2901 BCO, NEG NAT



PV-2900 Z



PV-2032



## TENSORES

TN-3900 DHA 1.00 MT



TN-3901 DHA 1.20 MT



RONDANA-DHA 3/8



TUERCA-DHA 3/8



## ESCUADRAS

ES-6508 UP UNION PUERTA



ES-6509 UV VENTANA





ES-6506 EP ESC PUERTA LINEA 1400



ES-6507 EV ESC VENTANA LINEA 1400



ES-GN467



ES-2001 E (ECONOMICA)



ES-2001 S (SEMILUJO)



ES-GN481 EUROVENT



ES-6510 HOJA



ES-6512 MARCO



ES-6511 3RIELES



ES-2000 MOSQUITERO



ES-2000 L SEMILUJO Y LUJO



ES-2000 E ECONOMICA



FE-2105 DHA GRIS Y NEGRA



FE-2106 D CON PLASTICO



FELPON



TE-3803 A TE-3806 DFM

TELA  
MOSQUITERO



ANCHOS  
1.05 MTS  
1.20 MTS  
1.50 MTS  
1.80 MTS

GRIS O NEGRA  
ROLLO DE 30 MTS



CA-1088



CA-1510



PELICULA-2023 ESMERILADA ROLLO 30 MT



PELICULA-2024 SEGURIDAD ROLLO 30 MT



## MENSULAS Y CREMALLERAS

ME-2400 A ME-2403



CR-1900 (1.20 MTS)



CR-1901 (1.80 MTS)



## BROCAS

BR-1/4 X 4 CONCRETO



BR-1/4 X 6 CONCRETO



BR-1408 AV 3/8"



BR-1410 AV 1/2"



BR-1/8 TR A BR-1/2 TR



CLAVE	MEDIDA
BR-1/8 TR	1/8 "
BR-9/64 TR	9 / 64"
BR-5/32 TR	5 / 32"
BR-3/16 TR	3 / 16"
BR-1/4 TR	1 / 4"
BR-5/16 TR	5 / 16"
BR-3/8 TR	3 / 8"

## CORTADORES, CUTTER Y LIMPIADORES

CV-1900 DHA (TIPO TOYO)



CV-1901 DHA



CUTTER DHA



GA-800 DHA



NAVAJA-CUTTER D



NAVAJA-GA800 D





1137 H



CV-1902



LIMPIA-MET



SE-3411 SEGUETA N.24



BARRA-A003



CV-BO100



PULIDOR-METALES



OXIDO-1/4



DI-0001



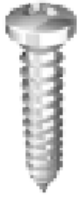
ST-A0225



SE-3410 SEGUETA N.18



PIJA CABEZA FIJADORA FDS



CLAVE	MEDIDA
PI-2700	8 X 1/2
PI-2701	8 X 3/4
PI-2702	8 X 1"
PI-2703	8 X 1 1/2
PI-2708	8 X 2"
PI-2704	10 X 1/2
PI-2705	10 X 3/4
PI-2706	10 X 1"
PI-2707	10 X 1 1/2
PI-2709	10 X 2"



PIJA CABEZA PLANA NDS



CLAVE	MEDIDA
PI-2700	8 X 1/2
PI-2701	8 X 3/4
PI-2702	8 X 1"
PI-2703	8 X 1 1/2
PI-2708	8 X 2"
PI-2704	10 X 1/2
PI-2705	10 X 3/4
PI-2706	10 X 1"
PI-2707	10 X 1 1/2
PI-2709	10 X 2"



TORNILLO PARA MADERA  
GALVANIZADO O PAVONADO

CLAVE	MEDIDA
TO-3100	10 X 1 1/2
TO-3101	10 X 2"
TO-3102	10 X 2 1/2
TO-3103	10 X 3"
TO-3104	8 X 2 1/2



TO-3100 N



TO-3100 P



RM-0070 HE



REMACHE INDUS



CLAVE	GRUESO	NUMERO
RE-3100	1/8"	# 43
RE-3101	1/8"	# 44
RE-3102	1/8"	# 45
RE-3103	1/8"	# 46
RE-3104	5/32"	# 54
RE-3105	5/32"	# 56



PS-2800 DHA



# SILICONES, SELLADORES Y ESPUMAS

SI-3306 ACRILASTIC



SI-3314 POLIURETANO



SI-3319 POLICARBONATO



SI-3311 SILICON



ESPUMA



SI-3305 795 DC



PL-A1097 GUNTHER



SI-PRESTO ESTRUCTURAL



SI-3301 ARQ



SI-3301



SI-3301 ANT



SI-3308



SI-3320



SI-3321



SI-1101



SI-1100



SI-3300



SI-FIJASET



ESPUMA-PNNS



SI-3322





SI-HITECH



SI-2200



SI-3309



## CINTAS

CI-1/2 TDHA TRANSPARENTE



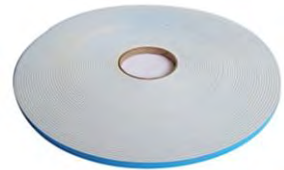
CI-3/8 TDHA TRANSPARENTE



CNV- 3MM BLANCA

1/8X1/2

1/8X3/8



CNV- 3MM

1/8X1/4

1/8X1/2

1/8X3/8

1/8X3/4



CNV- 6MM

1/4X1/4

1/4X1/2

1/4X3/8

1/4X3/4



CI-TAPAGOTERA



CI-0015



CI-0012



## VINIL

VI-50 MADISON



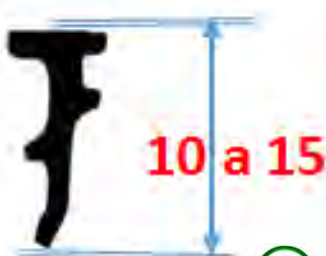
VI-143 PENNSYLVANIA



VI-124 HERRALUM



VI-150 CUÑA MADISON



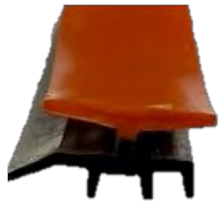
VI-156 PENNSYLVANIA



VINIL 4000 MADISON 3.5



VI-1400 PEINE



VI-1400 RESPALDO



VI-1400 HONGO



TROQUEL PARA 1400  
(CHANGUITO)



TROQUEL PARA 4600  
(CHANGUITO)

